

Scan the QR code  
to find out more



# HOME WATER KIT

## INLINE INSTALLATION & CARTRIDGE REPLACEMENT INSTRUCTIONS

### THIS HOME WATER KIT INCLUDES

- A Head
- A Filter Cartridge
- An installation kit

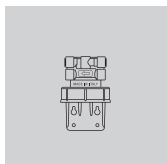


TEMPERATURE  
Min - Max  
4 °C – 30 °C

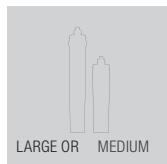


WORKING  
PRESSURE  
Min - Max  
2 bar – 6 bar

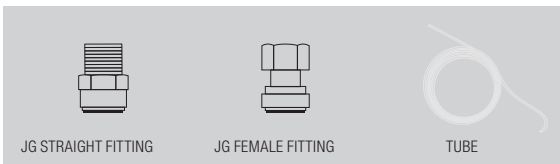
#### HEAD



#### CARTRIDGE

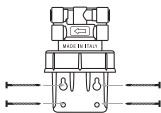
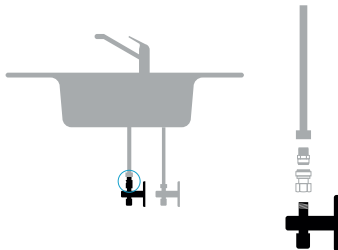
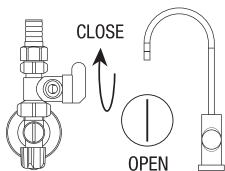


#### INSTALLATION KIT



# HOME WATER KIT

## INLINE INSTALLATION



1

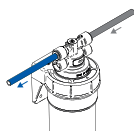
Close the water inlet and open the outlet faucet to drain all the water out of the piping system.

2

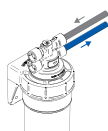
Disconnect the faucet tubes and install the delivered fitting on the cold water line faucet tubes. Take care of the remaining water that could come from those tubes. Use teflon tape for the connections.

3

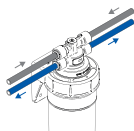
Mount the delivered head onto the wall. Make sure to have enough available space for the installation of the cartridge.



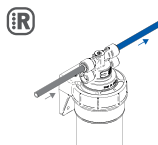
**SERIES HEAD**



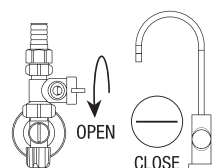
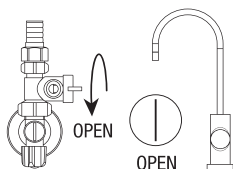
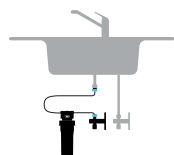
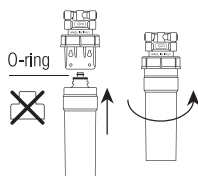
**SINGLE HEAD**



**PARALLEL HEAD**



**R HEAD**



**4**

Connect the delivered tubing to the fittings and the head. If the tubing has to be cut, make sure it is done straightly. Please pay attention to the correct connection to the inlet and the outlet as shown below according your type of head.

**5**

Remove the cap seal from the delivered cartridge and moisten the O-rings with water: push the cartridge up into the Head and turn it a ¼ turn to the right.

**6**

Your Home Water Kit should be installed as on the drawing.

**7**

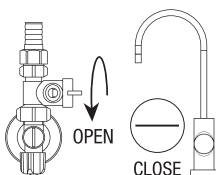
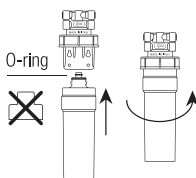
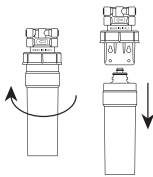
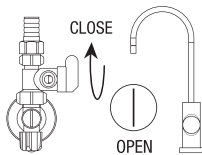
Gently open the water inlet valve and make sure to rinse the cartridge for 5 minutes. Do not take any water during this time.

**8**

After rinsing, close your outlet faucet and double-check your installation for any leakages.

# HOME WATER KIT

## CARTRIDGE REPLACEMENT INSTRUCTIONS



1

Close the water inlet valve and open the outlet faucet.

2

Turn the cartridge a  $\frac{1}{4}$  turn to the left and pull it out.

3

Remove the cap seal and moisten the o-rings with water: push the cartridge up and turn it a  $\frac{1}{4}$  turn to the right.

4

After rinsing, close your outlet faucet and double-check your installation for any leakages.